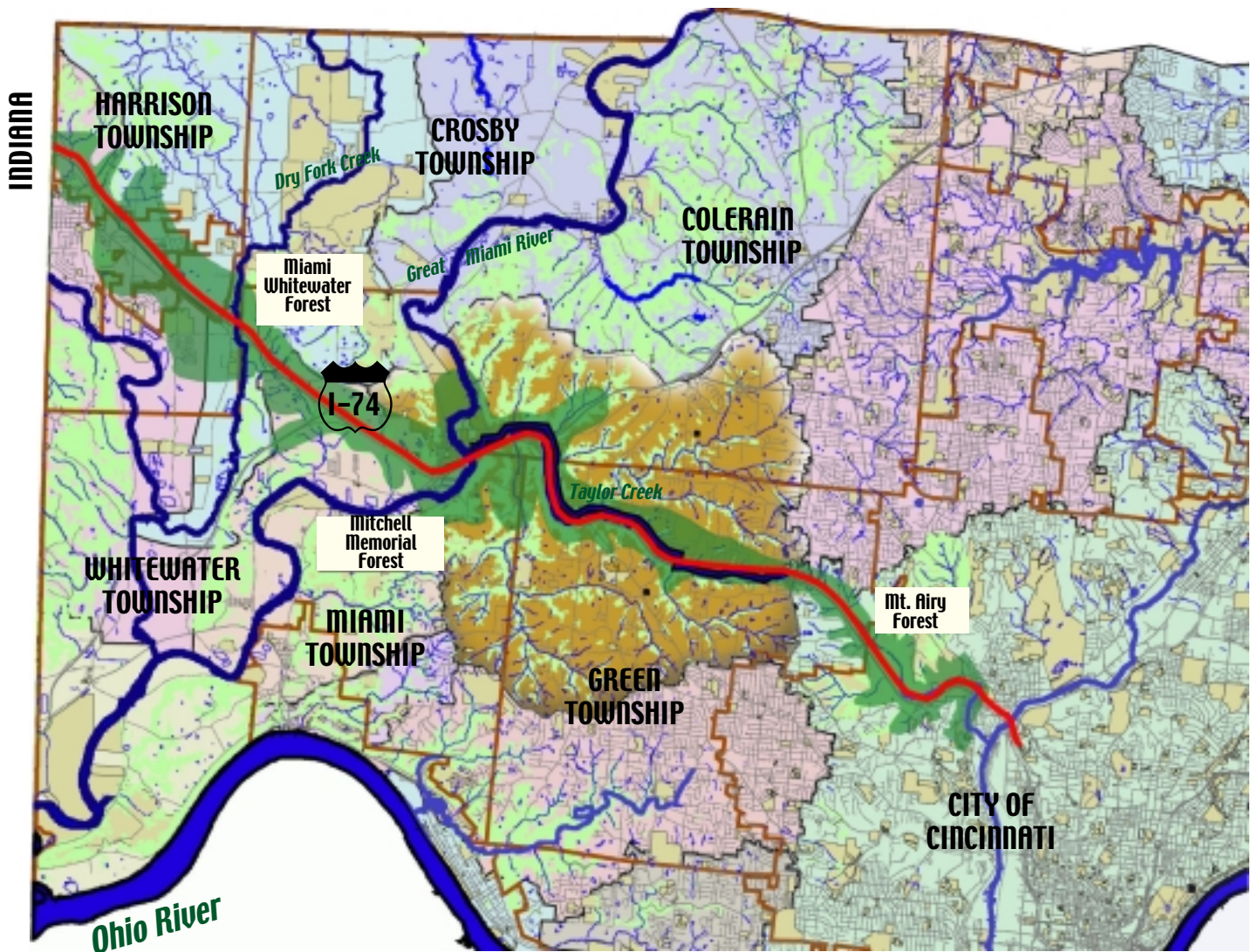


THE I-74 SCENIC GREENWAY

through western Hamilton County, Ohio



LOOKING WEST: Taylor Ridge crescent at I-74 / Rybolt Road Interchange in Green Township is threatened by development



WATERSHED MAP OF WESTERN HAMILTON COUNTY
with I-74 and Greenway boundaries added

THE LAND CONSERVANCY
OF HAMILTON COUNTY, OHIO

513.574.1849 www.LandConservancyHC.org